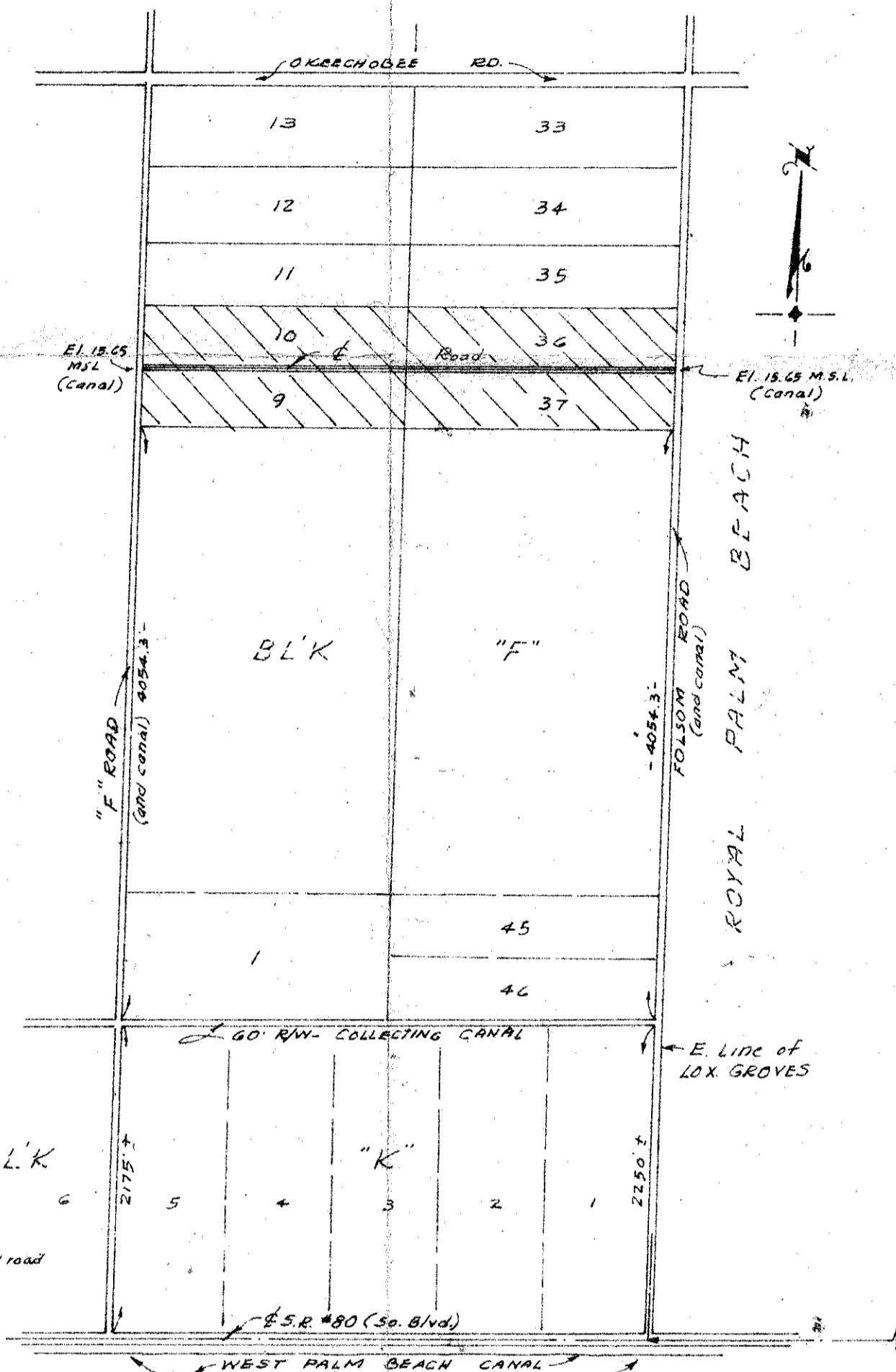
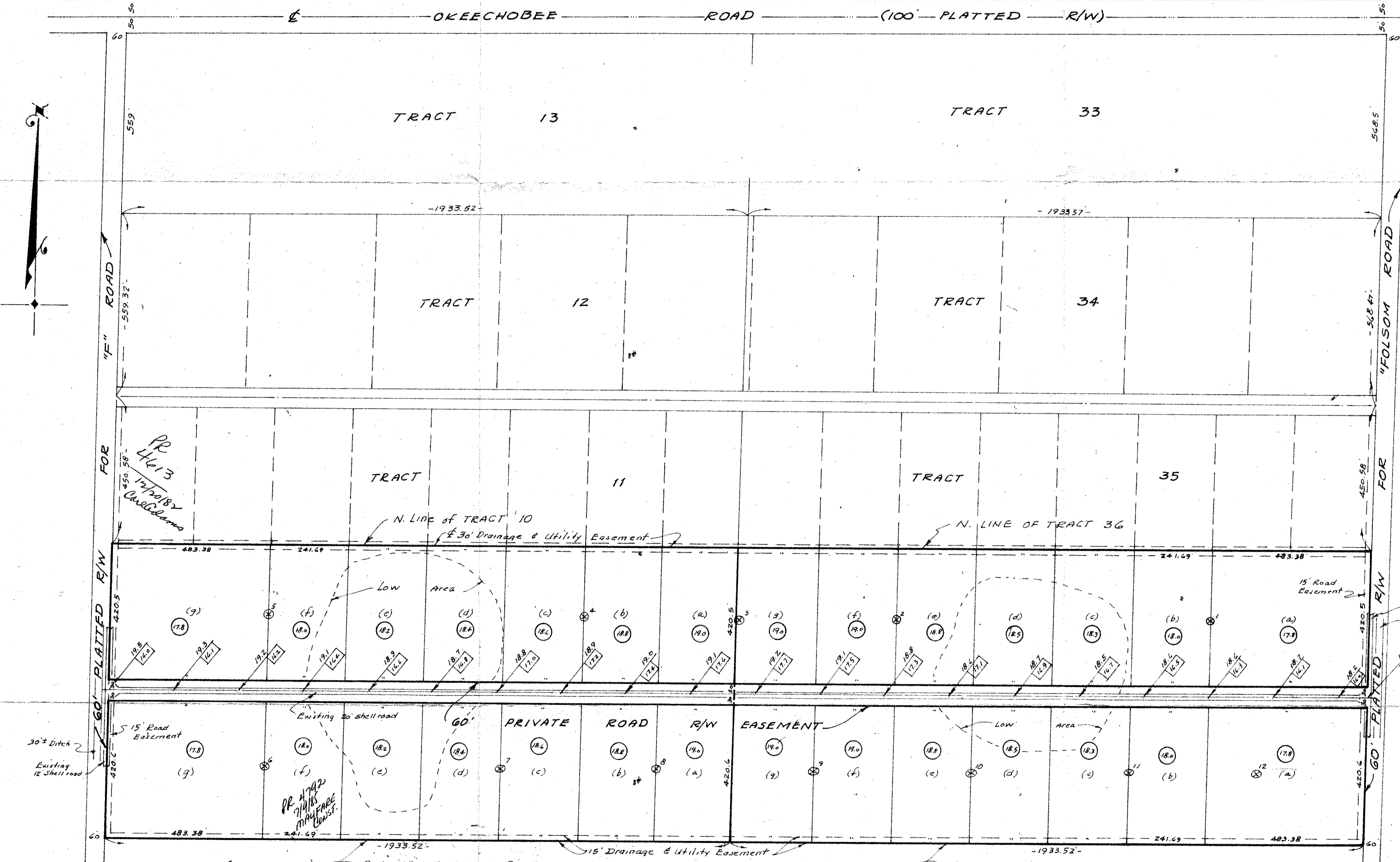


PERCOLATION & SOIL TESTS

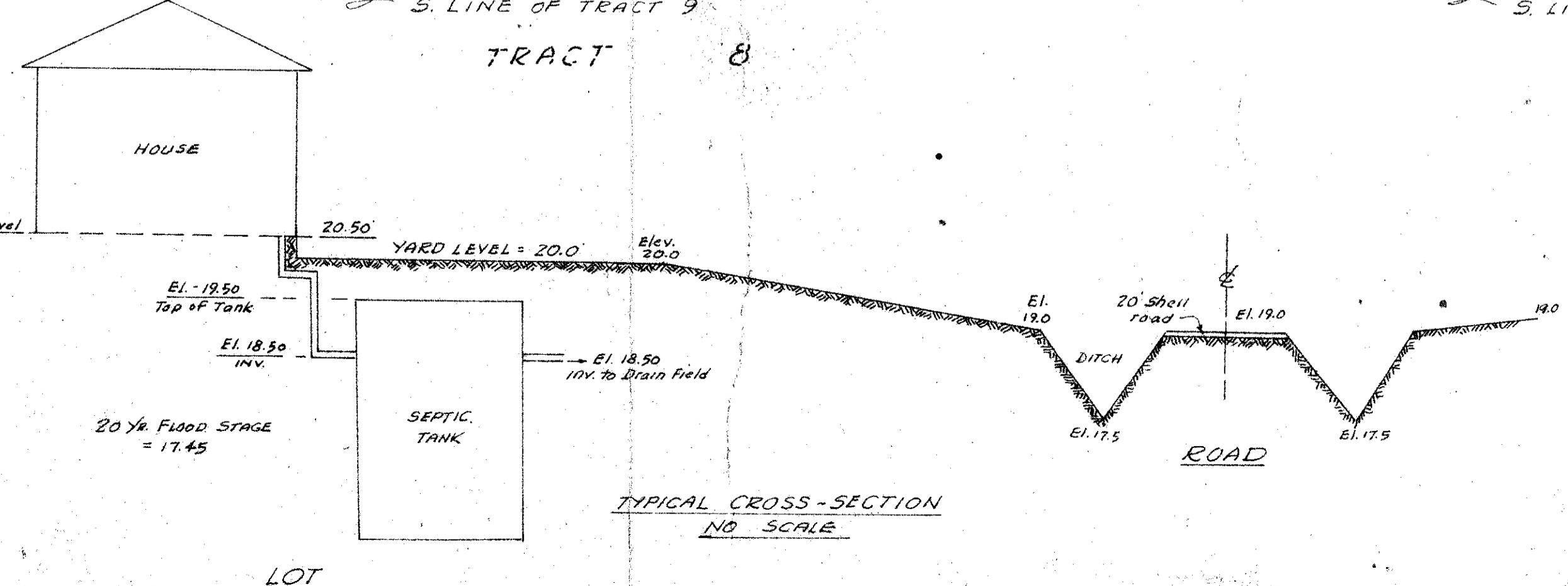
Taken as indicated. Percolation tests were made in accordance with method outlined in Chapter 170 C-4.1, of Fla. State Sanitary Code. Soil depths were measured from the existing ground level at each location.

① Perc. Rate = 0.50 min/inch SOIL: 0.0-0.3 Grey sand 0.3-2.3 Yellow " 2.3-4.0 Marl 4.0-4.5 Shell 4.5 Rock Water Table = 3.0'	② Perc. Rate = 0.67 min/inch SOIL: 0.0-0.3 Brown sand 0.3-1.8 Yellow " 1.8-2.5 White " 2.5-4.5 Rock Water Table = 2.0'	③ Perc. Rate = 0.92 min/inch SOIL: 0.0-0.8 Grey sand 0.8-2.0 White " 2.0-2.5 Marl 2.5 Rock Water Table = 2.2'	④ Perc. Rate = 0.67 min/inch SOIL: 0.0-0.2 Grey sand 0.2-1.0 White " 1.0-3.0 Yellow " 3.0-4.0 Marl 4.0 Rock Water Table = 2.0'	⑤ Perc. Rate = 0.83 min/inch SOIL: 0.0-1.0 Grey sand 1.0-3.0 White " 3.0-4.0 Marl 4.0 Rock Water Table = 2.0'	⑥ Perc. Rate = 0.71 min/inch SOIL: 0.0-0.7 Grey sand 0.7-2.5 Brown " 2.5-4.0 Marl 4.0-4.5 Shell 4.5 Rock Water Table = 2.4'	⑦ Perc. Rate = 0.50 min/inch SOIL: 0.0-0.4 Grey sand 0.4-2.5 Yellow " 2.5-4.0 Marl 4.0-4.3 Shell 4.3 Rock Water Table = 2.5'	⑧ Perc. Rate = 0.67 min/inch SOIL: 0.0-3.0 Grey sand 3.0-3.8 Marl 3.8-5.5 Shell 5.5 Rock Water Table = 2.4'
--	---	--	--	--	---	--	--



NOTES:
 ① Elevations existing 20' shell road shown thus
 ② Elevations of bottom of Swales " " "
 ③ Elevations of Yards " " "
 ④ Location of Percolation (Soil Tests) " " "
 All elevations are based on U.S.C. & G.S. Datum.
 All lots contain 2.5 acres, gross, except corner lots (5.4, gross).
 All Lot Corners staked with 1/2" pipe.

ur0377.1gr
 LOXAHATCHEE GROVES TR 9,10,36 & 37
 BK F



DESIGN DATA
 25 year Flood stage on West Palm Beach Canal occurred October, 1947 at 17.15', Mean Sea Level, prior to installation of pumps at Loxahatchee Groves.
 In addition, the Soil Conservation Service, U.S.D.A. will hold hearings on August 27, 1949, for PL 566 Project, which will improve drainage and pumping in the area.
 In addition, the Flood Control District and the Corps of Engineers have had approval of the project to deepen the West Palm Beach Canal and install more adequate discharge facilities at Lake Worth. The present maximum operating level in the canal is 14.00 feet, and the future design (2 years) of 20 year flood level is 14.00 feet. Thus our estimate of 15.15 feet, M.S.L., is conservative.

EARL H. MARTIN
 REG. CIVIL ENGINEER
 FLA. CERT. No. 5153

JOHN R. DAVIS & ASSOCIATES, INC.
 REGISTERED ENGINEERS and SURVEYORS
 WEST PALM BEACH - LAKE WORTH, FLORIDA

Earl H. Martin
 EARL H. MARTIN

PROPOSED SUBDIVISION OF:
TRACTS 9, 10, 36 & 37, BLOCK "F"
LOXAHATCHEE GROVES
 (Plat Book 12, Page 29)
 LOXAHATCHEE, PALM BEACH COUNTY, FLORIDA
 FOR
LOXAHATCHEE INVESTMENTS, LTD.

SEPT. 15, 1969 SCALE: 1" = 200' REG. PLAT 12-29
 FB. L-21